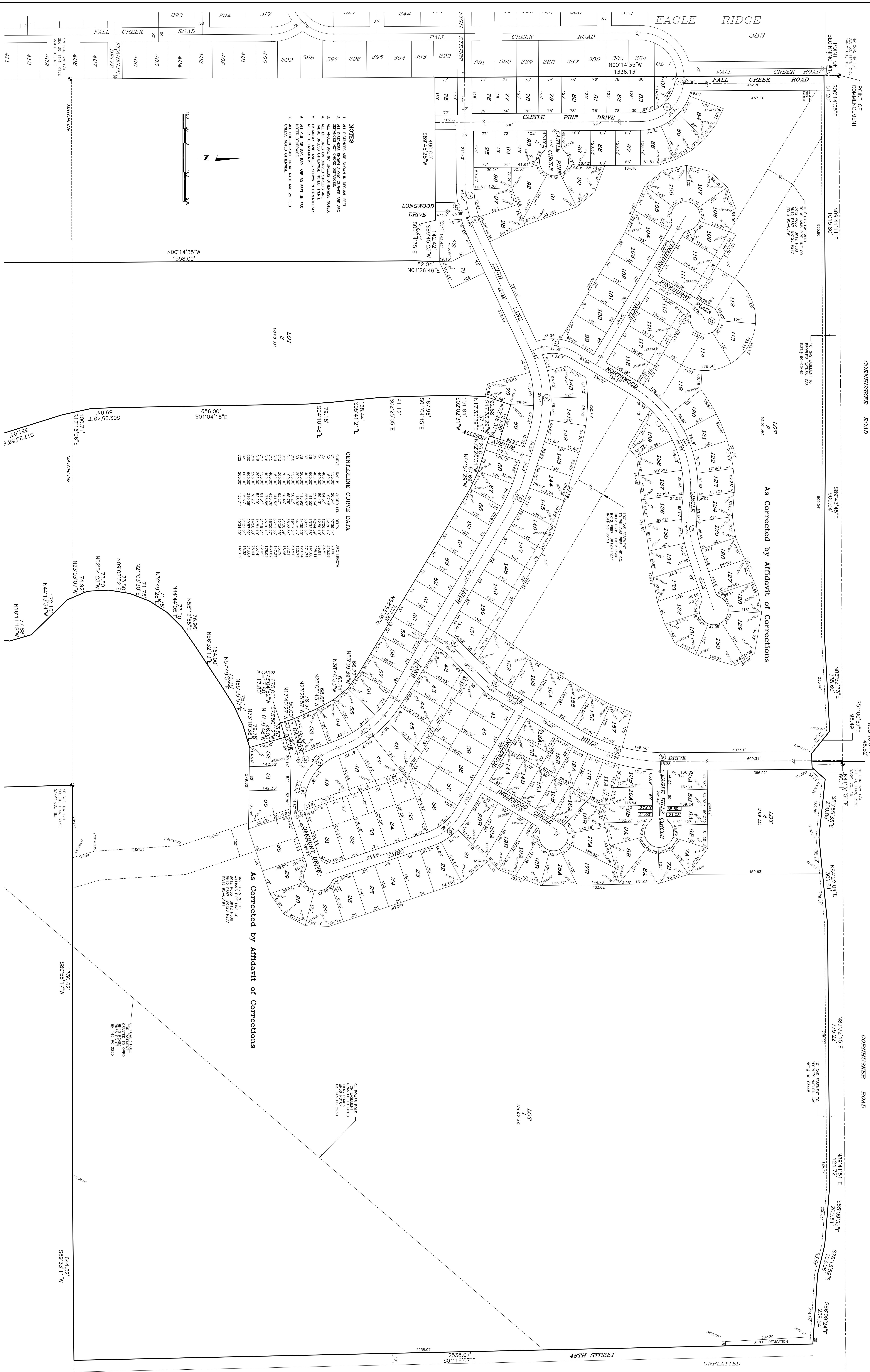


# EAGLE HILLS

LOTS 1 THROUGH 157, INCLUSIVE, BEING A PLATTING OF PART OF TAX LOTS 2, 3A, 4, 5A AND 5B TOGETHER WITH LOT 1 HEINEN ADDITION, A SUBDIVISION, AS SURVEYED, PLATTED AND RECORDED IN SARPY COUNTY, NEBRASKA, ALL IN SECTION 30, TOWNSHIP 14 NORTH, RANGE 13 EAST OF THE 6TH P.M. SARPY COUNTY NEBRASKA, AND LOTS 158 AND 159, INCLUSIVE, BEING A REPLATTING OF LOT 593 AND PART OF LOT 594, EAGLE RIDGE, A SUBDIVISION AS SURVEYED, PLATTED AND RECORDED IN SARPY COUNTY, NEBRASKA, BEING IN THE EAST HALF OF SECTION 25, TOWNSHIP 14 NORTH, RANGE 12 EAST OF THE 6TH P.M., SARPY COUNTY, NEBRASKA.



- NOTES**
1. ALL DIMENSIONS ARE SHOWN IN DECIMAL FEET.
  2. ALL DIMENSIONS SHOWN IN PARENTHESIS ARE AS SHOWN ON THE PREVIOUS PLAT.
  3. ALL LINES ARE FOR UNLESS OTHERWISE NOTED.
  4. ALL LINES UNLESS OTHERWISE NOTED ARE 1/4" WIDE.
  5. ALL DIMENSIONS SHOWN IN PARENTHESIS ARE FOR THE PREVIOUS PLAT.
  6. ALL DIMENSIONS SHOWN ARE 20 FEET UNLESS OTHERWISE NOTED.
  7. UNLESS NOTED OTHERWISE.

**CENTRILINE CURVE DATA**

STATION	CHORD BEARING	CHORD LENGTH	ARC LENGTH	CHORD BEARING	CHORD LENGTH	ARC LENGTH
1	N79°18'00"W	79.18	79.18	S04°10'48"E	79.18	79.18
2	N79°18'00"W	79.18	79.18	S04°10'48"E	79.18	79.18
3	N79°18'00"W	79.18	79.18	S04°10'48"E	79.18	79.18
4	N79°18'00"W	79.18	79.18	S04°10'48"E	79.18	79.18
5	N79°18'00"W	79.18	79.18	S04°10'48"E	79.18	79.18
6	N79°18'00"W	79.18	79.18	S04°10'48"E	79.18	79.18
7	N79°18'00"W	79.18	79.18	S04°10'48"E	79.18	79.18
8	N79°18'00"W	79.18	79.18	S04°10'48"E	79.18	79.18
9	N79°18'00"W	79.18	79.18	S04°10'48"E	79.18	79.18
10	N79°18'00"W	79.18	79.18	S04°10'48"E	79.18	79.18
11	N79°18'00"W	79.18	79.18	S04°10'48"E	79.18	79.18
12	N79°18'00"W	79.18	79.18	S04°10'48"E	79.18	79.18
13	N79°18'00"W	79.18	79.18	S04°10'48"E	79.18	79.18
14	N79°18'00"W	79.18	79.18	S04°10'48"E	79.18	79.18
15	N79°18'00"W	79.18	79.18	S04°10'48"E	79.18	79.18
16	N79°18'00"W	79.18	79.18	S04°10'48"E	79.18	79.18
17	N79°18'00"W	79.18	79.18	S04°10'48"E	79.18	79.18
18	N79°18'00"W	79.18	79.18	S04°10'48"E	79.18	79.18
19	N79°18'00"W	79.18	79.18	S04°10'48"E	79.18	79.18
20	N79°18'00"W	79.18	79.18	S04°10'48"E	79.18	79.18
21	N79°18'00"W	79.18	79.18	S04°10'48"E	79.18	79.18
22	N79°18'00"W	79.18	79.18	S04°10'48"E	79.18	79.18
23	N79°18'00"W	79.18	79.18	S04°10'48"E	79.18	79.18
24	N79°18'00"W	79.18	79.18	S04°10'48"E	79.18	79.18
25	N79°18'00"W	79.18	79.18	S04°10'48"E	79.18	79.18
26	N79°18'00"W	79.18	79.18	S04°10'48"E	79.18	79.18
27	N79°18'00"W	79.18	79.18	S04°10'48"E	79.18	79.18
28	N79°18'00"W	79.18	79.18	S04°10'48"E	79.18	79.18
29	N79°18'00"W	79.18	79.18	S04°10'48"E	79.18	79.18
30	N79°18'00"W	79.18	79.18	S04°10'48"E	79.18	79.18
31	N79°18'00"W	79.18	79.18	S04°10'48"E	79.18	79.18
32	N79°18'00"W	79.18	79.18	S04°10'48"E	79.18	79.18
33	N79°18'00"W	79.18	79.18	S04°10'48"E	79.18	79.18
34	N79°18'00"W	79.18	79.18	S04°10'48"E	79.18	79.18
35	N79°18'00"W	79.18	79.18	S04°10'48"E	79.18	79.18
36	N79°18'00"W	79.18	79.18	S04°10'48"E	79.18	79.18
37	N79°18'00"W	79.18	79.18	S04°10'48"E	79.18	79.18
38	N79°18'00"W	79.18	79.18	S04°10'48"E	79.18	79.18
39	N79°18'00"W	79.18	79.18	S04°10'48"E	79.18	79.18
40	N79°18'00"W	79.18	79.18	S04°10'48"E	79.18	79.18
41	N79°18'00"W	79.18	79.18	S04°10'48"E	79.18	79.18
42	N79°18'00"W	79.18	79.18	S04°10'48"E	79.18	79.18
43	N79°18'00"W	79.18	79.18	S04°10'48"E	79.18	79.18
44	N79°18'00"W	79.18	79.18	S04°10'48"E	79.18	79.18
45	N79°18'00"W	79.18	79.18	S04°10'48"E	79.18	79.18
46	N79°18'00"W	79.18	79.18	S04°10'48"E	79.18	79.18
47	N79°18'00"W	79.18	79.18	S04°10'48"E	79.18	79.18
48	N79°18'00"W	79.18	79.18	S04°10'48"E	79.18	79.18
49	N79°18'00"W	79.18	79.18	S04°10'48"E	79.18	79.18
50	N79°18'00"W	79.18	79.18	S04°10'48"E	79.18	79.18
51	N79°18'00"W	79.18	79.18	S04°10'48"E	79.18	79.18
52	N79°18'00"W	79.18	79.18	S04°10'48"E	79.18	79.18
53	N79°18'00"W	79.18	79.18	S04°10'48"E	79.18	79.18
54	N79°18'00"W	79.18	79.18	S04°10'48"E	79.18	79.18
55	N79°18'00"W	79.18	79.18	S04°10'48"E	79.18	79.18
56	N79°18'00"W	79.18	79.18	S04°10'48"E	79.18	79.18
57	N79°18'00"W	79.18	79.18	S04°10'48"E	79.18	79.18
58	N79°18'00"W	79.18	79.18	S04°10'48"E	79.18	79.18
59	N79°18'00"W	79.18	79.18	S04°10'48"E	79.18	79.18
60	N79°18'00"W	79.18	79.18	S04°10'48"E	79.18	79.18
61	N79°18'00"W	79.18	79.18	S04°10'48"E	79.18	79.18
62	N79°18'00"W	79.18	79.18	S04°10'48"E	79.18	79.18
63	N79°18'00"W	79.18	79.18	S04°10'48"E	79.18	79.18
64	N79°18'00"W	79.18	79.18	S04°10'48"E	79.18	79.18
65	N79°18'00"W	79.18	79.18	S04°10'48"E	79.18	79.18
66	N79°18'00"W	79.18	79.18	S04°10'48"E	79.18	79.18
67	N79°18'00"W	79.18	79.18	S04°10'48"E	79.18	79.18
68	N79°18'00"W	79.18	79.18	S04°10'48"E	79.18	79.18
69	N79°18'00"W	79.18	79.18	S04°10'48"E	79.18	79.18
70	N79°18'00"W	79.18	79.18	S04°10'48"E	79.18	79.18
71	N79°18'00"W	79.18	79.18	S04°10'48"E	79.18	79.18
72	N79°18'00"W	79.18	79.18	S04°10'48"E	79.18	79.18
73	N79°18'00"W	79.18	79.18	S04°10'48"E	79.18	79.18
74	N79°18'00"W	79.18	79.18	S04°10'48"E	79.18	79.18
75	N79°18'00"W	79.18	79.18	S04°10'48"E	79.18	79.18
76	N79°18'00"W	79.18	79.18	S04°10'48"E	79.18	79.18
77	N79°18'00"W	79.18	79.18	S04°10'48"E	79.18	79.18
78	N79°18'00"W	79.18	79.18	S04°10'48"E	79.18	79.18
79	N79°18'00"W	79.18	79.18	S04°10'48"E	79.18	79.18
80	N79°18'00"W	79.18	79.18	S04°10'48"E	79.18	79.18
81	N79°18'00"W	79.18	79.18	S04°10'48"E	79.18	79.18
82	N79°18'00"W	79.18	79.18	S04°10'48"E	79.18	79.18
83	N79°18'00"W	79.18	79.18	S04°10'48"E	79.18	79.18
84	N79°18'00"W	79.18	79.18	S04°10'48"E	79.18	79.18
85	N79°18'00"W	79.18	79.18	S04°10'48"E	79.18	79.18
86	N79°18'00"W	79.18	79.18	S04°10'48"E	79.18	79.18
87	N79°18'00"W	79.18	79.18	S04°10'48"E	79.18	79.18
88	N79°18'00"W	79.18	79.18	S04°10'48"E	79.18	79.18
89	N79°18'00"W	79.18	79.18	S04°10'48"E	79.18	79.18
90	N79°18'00"W	79.18	79.18	S04°10'48"E	79.18	79.18
91	N79°18'00"W	79.18	79.18	S04°10'48"E	79.18	79.18
92	N79°18'00"W	79.18	79.18	S04°10'48"E	79.18	79.18
93	N79°18'00"W	79.18	79.18	S04°10'48"E	79.18	79.18
94	N79°18'00"W	79.18	79.18	S04°10'48"E	79.18	79.18
95	N79°18'00"W	79.18	79.18	S04°10'48"E	79.18	79.18
96	N79°18'00"W	79.18	79.18	S04°10'48"E	79.18	79.18
97	N79°18'00"W	79.18	79.18	S04°10'48"E	79.18	79.18
98	N79°18'00"W	79.18	79.18	S04°10'48"E	79.18	79.18
99	N79°18'00"W	79.18	79.18	S04°10'48"E	79.18	79.18
100	N79°18'00"W	79.18	79.18	S04°10'48"E	79.18	79.18
101	N79°18'00"W	79.18	79.18	S04°10'48"E	79.18	79.18
102	N79°18'00"W	79.18	79.18	S04°10'48"E	79.18	79.18
103	N79°18'00"W	79.18	79.18	S04°10'48"E	79.18	79.18
104	N79°18'00"W	79.18	79.18	S04°10'48"E	79.18	79.18
105	N79°18'00"W	79.18	79.18	S04°10'48"E	79.18	79.18
106	N79°18'00"W	79.18	79.18	S04°10'48"E	79.18	79.18
107	N79°18'00"W	79.18	79.18	S04°10'48"E	79.18	79.18
108	N79°18'00"W	79.18	79.18	S04°10'48"E	79.18	79.18
109	N79°18'00"W	79.18	79.18	S04°10'48"E	79.18	79.18
110	N79°18'00"W	79.18	79.18	S04°10'48"E	79.18	79.18
111	N79°18'00"W	79.18	79.18	S04°10'48"E	79.18	79.18
112	N79°18'00"W	79.18	79.18	S04°10'48"E	79.18	79.18
113	N79°18'00"W	79.18	79.18	S04°10'48"E	79.18	79.18
114	N79°18'00"W	79.18	79.18	S04°10'48"E	79.18	79.18
115	N79°18'00"W	79.18	79.18	S04°10'48"E	79.18	79.18
116	N79°18'00"W	79.18	79.18	S04°10'48"E	79.18	79.18
117	N79°18'00"W	79.18	79.18	S04°10'48"E	79.18	79.18
118	N79°18'00"W	79.18	79.18	S04°10'48"E	79.18	79.18
119	N79°18'00"W	79.18	79.18	S04°10'48"E	79.18	79.18
120	N79°18'00"W	79.18	79.18	S04°10'48"E	79.18	79.18
121	N79°18'00"W	79.18	79.18	S04°10'48"E	79.18	79.18
122	N79°18'00"W	79.18	79.18	S04°10'48"E	79.18	79.18
123	N79°18'00"W	79.18	79.18	S04°10'48"E	79.18	79.18
124	N79°18'00"W	79.18	79.18	S04°10'48"E	79.18	79.18
125	N79°18'00"W	79.18	79.18	S04°10'48"E	79.18	79.18
126	N79°18'00"W	79.18	79.18	S04°10'48"E	79.18	79.18
127	N79°18'00"W	79.18	79.18	S04°10'48"E	79.18	79.18
128	N79°18'00"W	79.18	79.18	S04°10'48"E	79.18	79.18
129	N79°18'00"W	79.18	79.18	S04°10'48"E	79.18	79.18