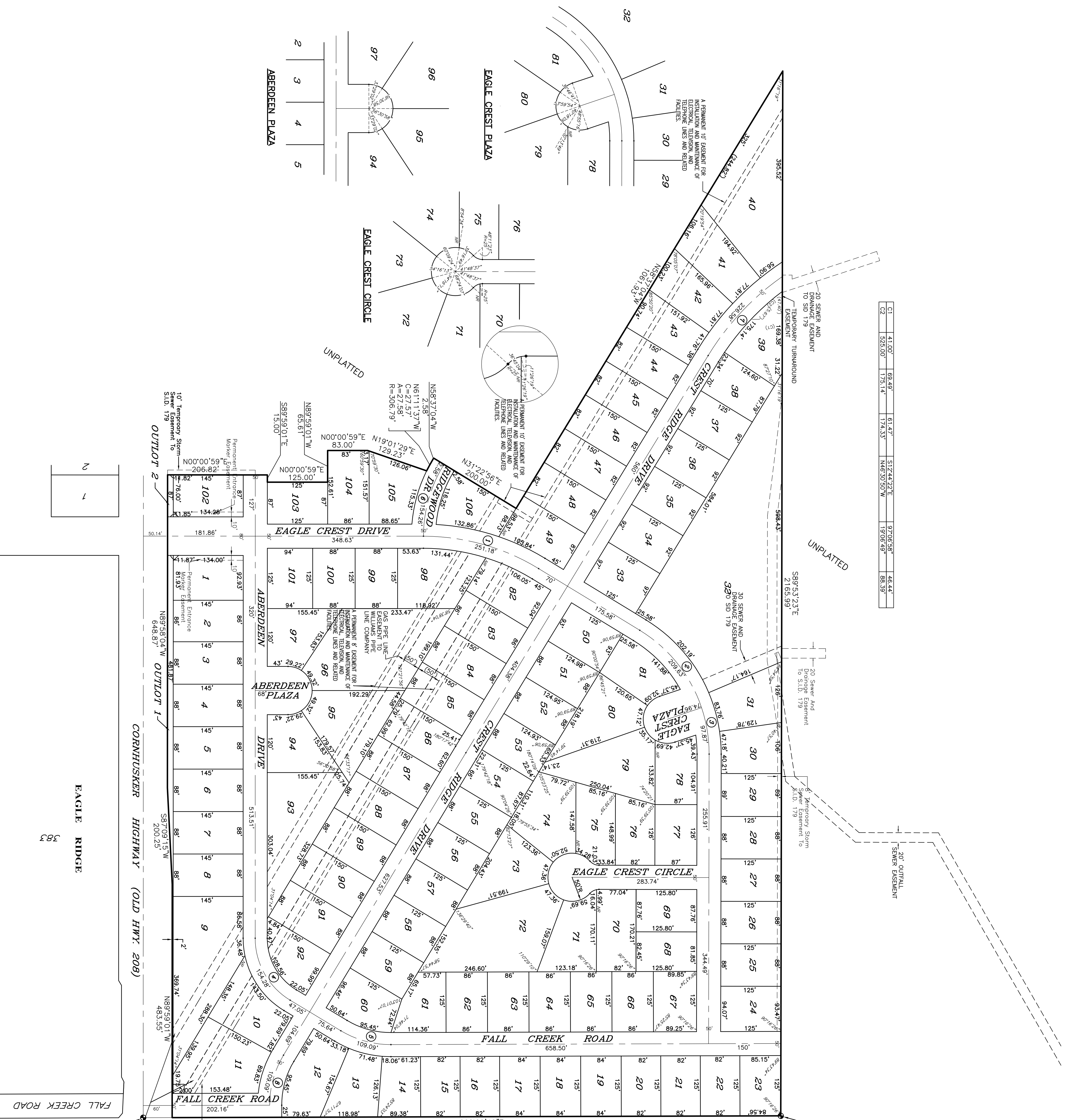


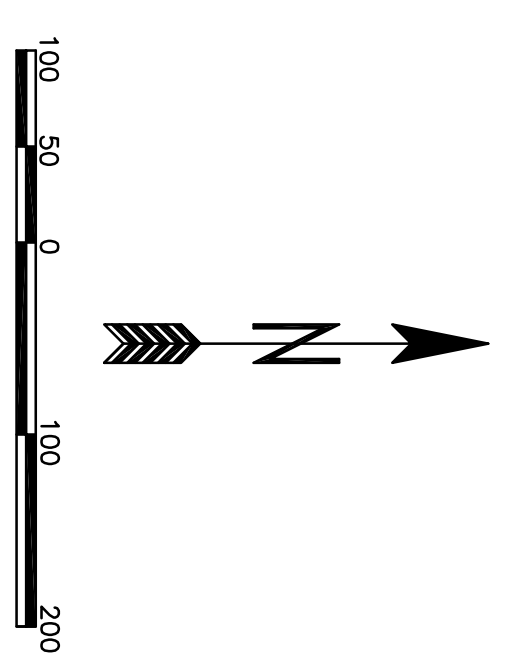
C1	41.00'	69.49'	61.47'	512.44'±2.2'E	97.08'±5.8"	46.44'
C2	525.00'	175.14'	174.53'	N46°50'50"W	197.08'±5.8"	88.39'



10' Temporary Storm Sewer Easement to SLD 179

20 Sewer and Drainage Easement to SLD 179

NE COR S 1/2 OF SE 1/4 SEC 24, T14N, R12E SHERMAN COUNTY, NE



- NOTES**
1. ALL DISTANCES ARE SHOWN IN DECIMAL FEET.
 2. ALL DISTANCES SHOWN ALONG CURVES ARE ARC DISTANCES NOT CHORD DISTANCES.
 3. ALL ANGLES ARE 90° UNLESS OTHERWISE NOTED.
 4. ALL LOT LINES ON CURVED STREETS ARE RADIAL UNLESS OTHERWISE NOTED. (N.R.)
 5. DISTANCES AND ANGLES SHOWN IN PARENTHESES REFER TO EASEMENTS.
 6. CUL-DE-SAC RADIUS ARE 50' UNLESS OTHERWISE NOTED.
 7. LOTS 1 THROUGH 9, 11 AND 102 WILL HAVE NO DIRECT ACCESS TO CORNHUSKER HIGHWAY.

CURVE TABLE

No.	Radius	Arc	Chord	Date
1	488.63'	251.18'	248.05'	N31°22'56"E
2	300.00'	97.87'	97.43'	N18°41'27"E
3	300.00'	97.87'	97.43'	N89°55'46"E
4	150.00'	154.28'	147.57'	N89°55'46"E
5	281.79'	154.26'	152.34'	S31°21'56"E
6	550.00'	226.58'	224.98'	S31°21'56"E
7	200.00'	109.09'	107.74'	S31°15'03"E

A PERMANENT EASEMENT FOR INSTALLATION AND MAINTENANCE OF ELECTRICAL, TELEVISION, AND TELEPHONE LINES AND RELATED FACILITIES.

A PERMANENT EASEMENT FOR INSTALLATION AND MAINTENANCE OF ELECTRICAL, TELEVISION, AND TELEPHONE LINES AND RELATED FACILITIES.

A PERMANENT EASEMENT FOR INSTALLATION AND MAINTENANCE OF ELECTRICAL, TELEVISION, AND TELEPHONE LINES AND RELATED FACILITIES.

A PERMANENT EASEMENT FOR INSTALLATION AND MAINTENANCE OF ELECTRICAL, TELEVISION, AND TELEPHONE LINES AND RELATED FACILITIES.

A PERMANENT EASEMENT FOR INSTALLATION AND MAINTENANCE OF ELECTRICAL, TELEVISION, AND TELEPHONE LINES AND RELATED FACILITIES.

A PERMANENT EASEMENT FOR INSTALLATION AND MAINTENANCE OF ELECTRICAL, TELEVISION, AND TELEPHONE LINES AND RELATED FACILITIES.

A PERMANENT EASEMENT FOR INSTALLATION AND MAINTENANCE OF ELECTRICAL, TELEVISION, AND TELEPHONE LINES AND RELATED FACILITIES.

A PERMANENT EASEMENT FOR INSTALLATION AND MAINTENANCE OF ELECTRICAL, TELEVISION, AND TELEPHONE LINES AND RELATED FACILITIES.

A PERMANENT EASEMENT FOR INSTALLATION AND MAINTENANCE OF ELECTRICAL, TELEVISION, AND TELEPHONE LINES AND RELATED FACILITIES.

A PERMANENT EASEMENT FOR INSTALLATION AND MAINTENANCE OF ELECTRICAL, TELEVISION, AND TELEPHONE LINES AND RELATED FACILITIES.

A PERMANENT EASEMENT FOR INSTALLATION AND MAINTENANCE OF ELECTRICAL, TELEVISION, AND TELEPHONE LINES AND RELATED FACILITIES.

A PERMANENT EASEMENT FOR INSTALLATION AND MAINTENANCE OF ELECTRICAL, TELEVISION, AND TELEPHONE LINES AND RELATED FACILITIES.

A PERMANENT EASEMENT FOR INSTALLATION AND MAINTENANCE OF ELECTRICAL, TELEVISION, AND TELEPHONE LINES AND RELATED FACILITIES.

A PERMANENT EASEMENT FOR INSTALLATION AND MAINTENANCE OF ELECTRICAL, TELEVISION, AND TELEPHONE LINES AND RELATED FACILITIES.

A PERMANENT EASEMENT FOR INSTALLATION AND MAINTENANCE OF ELECTRICAL, TELEVISION, AND TELEPHONE LINES AND RELATED FACILITIES.

A PERMANENT EASEMENT FOR INSTALLATION AND MAINTENANCE OF ELECTRICAL, TELEVISION, AND TELEPHONE LINES AND RELATED FACILITIES.

A PERMANENT EASEMENT FOR INSTALLATION AND MAINTENANCE OF ELECTRICAL, TELEVISION, AND TELEPHONE LINES AND RELATED FACILITIES.

A PERMANENT EASEMENT FOR INSTALLATION AND MAINTENANCE OF ELECTRICAL, TELEVISION, AND TELEPHONE LINES AND RELATED FACILITIES.